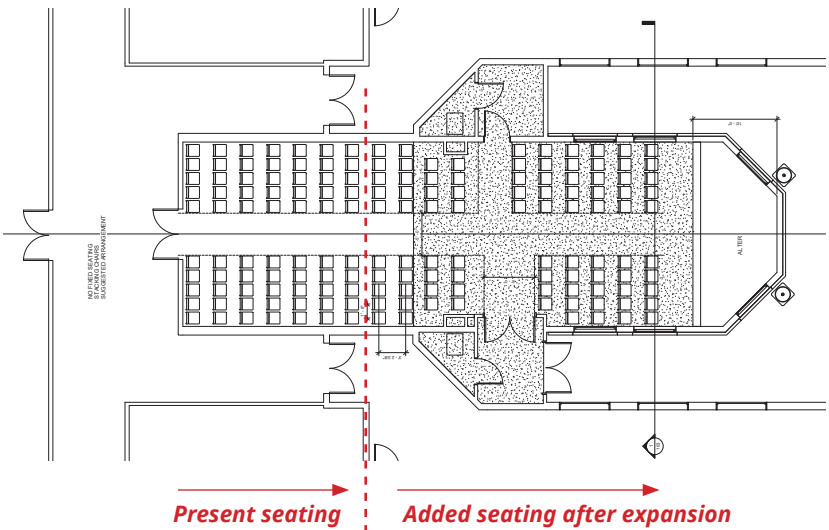


CHAPEL EXPANSION PROJECT

The following sketches highlight the changes to the Marie Macdonald Chapel as it is expanded. The seating capacity will double as the structure is extended eastward into the grammar school courtyard.

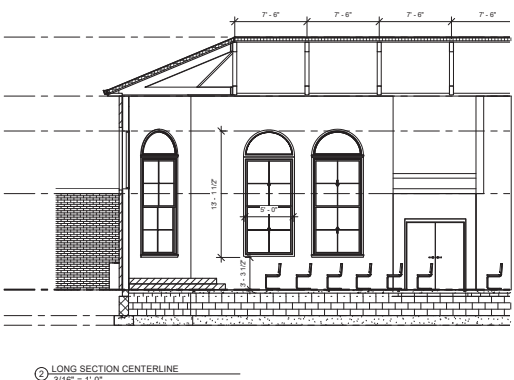
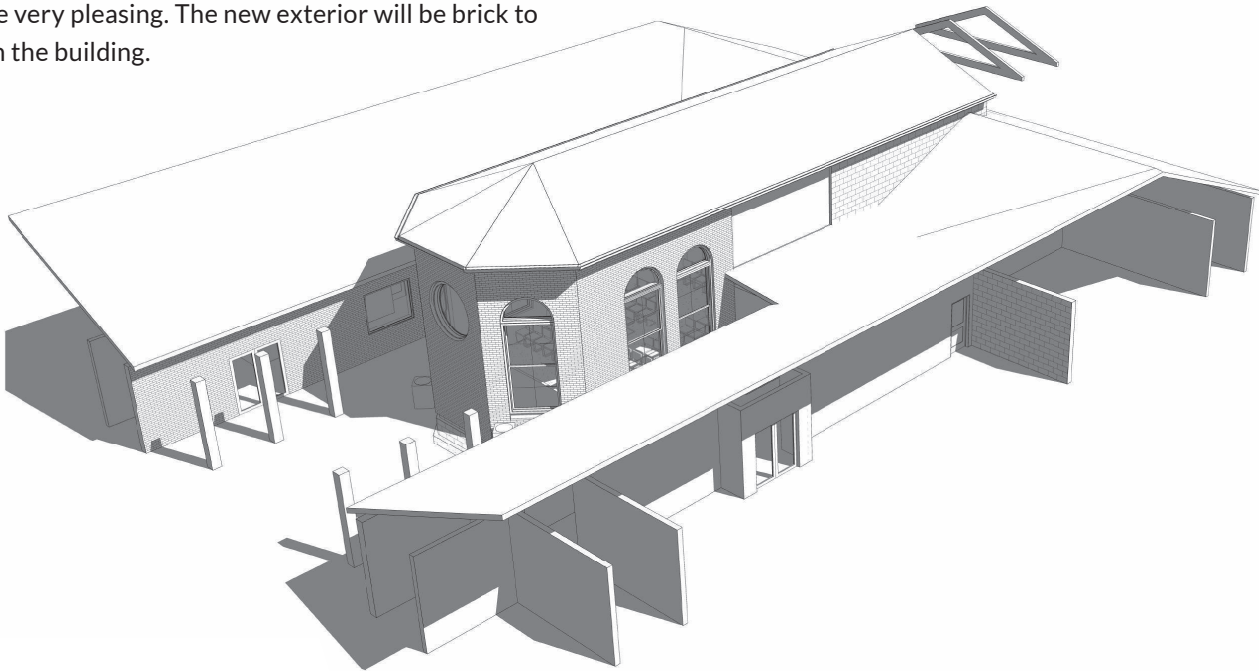
SEATING

The expanded chapel will provide seating for approximately 160 students. This means that the entire grammar, middle or high school can be accommodated, as opposed to a few selected grades. This will also create the possibility of holding chapel more than once per week. The seating will be moveable so that the chapel could also host orchestral productions or meetings for parents.



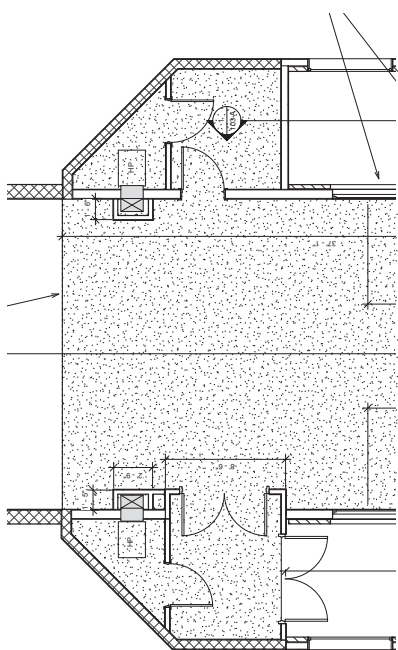
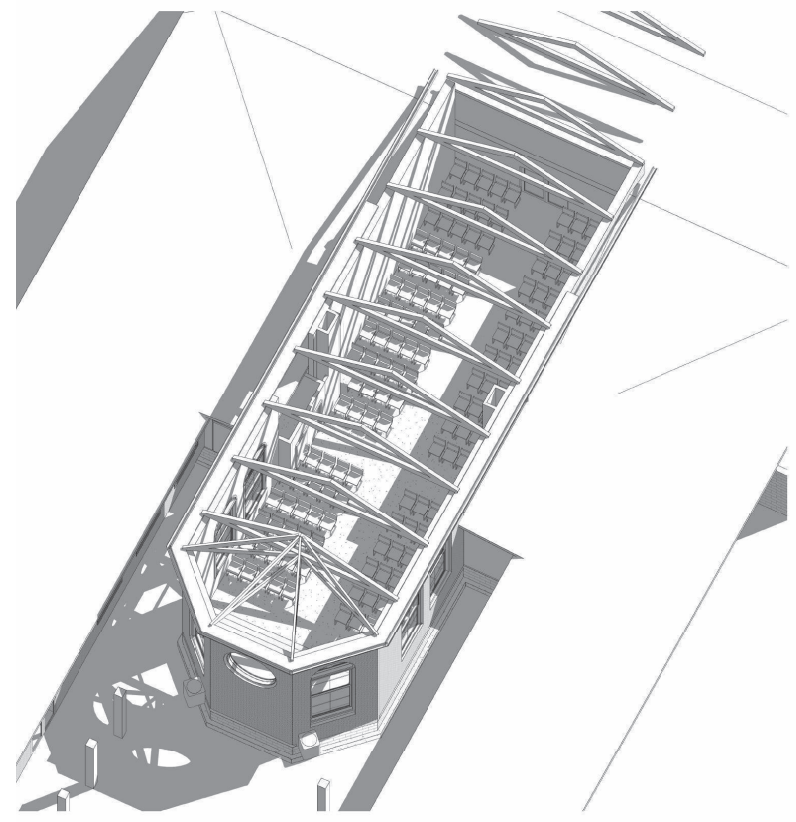
EXTERIOR

The finished expansion will eliminate the courtyard currently located between the grammar school wings. This makes demolition and construction difficult, but the effect will be very pleasing. The new exterior will be brick to match the building.



WINDOWS

The extended nave will create four new windows, that will be glassed with scenes from the Old and New Testaments. Two of these windows are currently being commissioned and will likely be installed a year from now. During construction, the existing windows will be removed and stored until the building is complete. They will then be reinstalled along with the new windows.



DOORS AND HALLWAYS

The doors that currently open to the courtyard will be removed to create space to accommodate HVAC and public address systems. There will also be space for a small sacristy where vestments, chalices and other items for worship will be stored.

INTERIOR

As the chapel doubles in size, the exposed timbers will be multiplied creating an “ark” effect in the nave. The “nave” is where the people sit, and is the ancient term for this part of a church. The Latin word is the source of our word for “navy,” and it is a purposeful use of the nautical term. The early Christians saw the church as the “ark” of God, a boat which offers salvation. Medieval construction carried the idea forward such that the interiors of churches were made to resemble an upside-down boat that offers protection.